

# \$454,900 - 19 Vista Close Se, Medicine Hat

MLS® #A2221168

## \$454,900

5 Bedroom, 3.00 Bathroom, 1,351 sqft  
Residential on 0.11 Acres

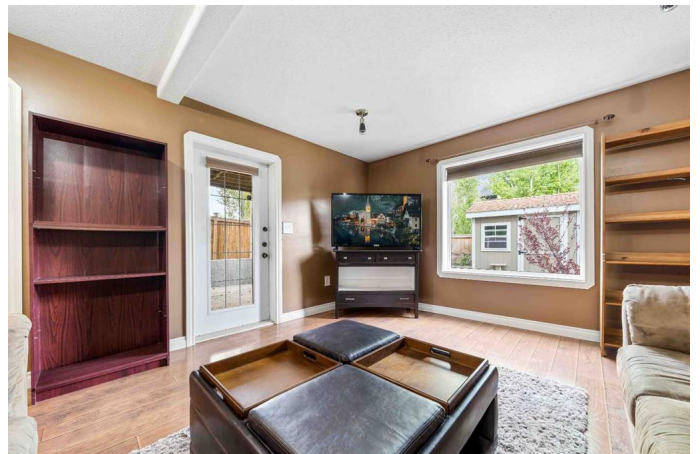
SE Southridge, Medicine Hat, Alberta

Great home in the sought after area of Vista in SE Southridge . Ideal for the growing family with 5 bedrooms and 3 baths. Features include a modified walk-out basement, large kitchen with separate dining area, large primary bedroom on the upper level, double attached heated garage and an east facing deck ideal for your morning coffee. Downstairs has 2 bedrooms and a large recreation/family room perfect for entertaining or company. Locate close to schools, parks and a strip mall hosting a pharmacy and doctors office. Central Vac has been plumbed in and only requires the tank and attachments. Note pet door in the garage door does not meet code and will be changed if the buyers request. Call today for your private viewing.

Built in 2006

### Essential Information

MLS® #	A2221168
Price	\$454,900
Bedrooms	5
Bathrooms	3.00
Full Baths	3
Square Footage	1,351
Acres	0.11
Year Built	2006
Type	Residential
Sub-Type	Detached



Style	1 and Half Storey
Status	Active

### Community Information

Address	19 Vista Close Se
Subdivision	SE Southridge
City	Medicine Hat
County	Medicine Hat
Province	Alberta
Postal Code	T1B0A9

### Amenities

Parking Spaces	2
Parking	Double Garage Attached
# of Garages	2

### Interior

Interior Features	Ceiling Fan(s), Vaulted Ceiling(s)
Appliances	Dishwasher, Dryer, Electric Range, Microwave, Refrigerator, Washer, Window Coverings, Gas Water Heater
Heating	Forced Air
Cooling	Central Air
Has Basement	Yes
Basement	Finished, Full

### Exterior

Exterior Features	None
Lot Description	Back Yard, Front Yard, Landscaped, Fruit Trees/Shrub(s)
Roof	Asphalt Shingle
Construction	Brick, Vinyl Siding
Foundation	Poured Concrete

### Additional Information

Date Listed	May 14th, 2025
Days on Market	10
Zoning	R-LD

### Listing Details

Listing Office	ROYAL LEPAGE COMMUNITY REALTY
----------------	-------------------------------

Data is supplied by Pillar 9â„¢ MLS® System. Pillar 9â„¢ is the owner of the copyright in its MLS® System. Data is deemed reliable but is not guaranteed accurate by Pillar 9â„¢. The trademarks MLS®, Multiple Listing Service® and the associated logos are owned by The Canadian Real Estate Association (CREA) and identify the quality of services provided by real estate professionals who are members of CREA. Used under license.