

# \$445,000 - 962 11 Street S, Lethbridge

MLS® #A2211621

**\$445,000**

3 Bedroom, 3.00 Bathroom, 1,300 sqft  
Residential on 0.06 Acres

Fleetwood, Lethbridge, Alberta

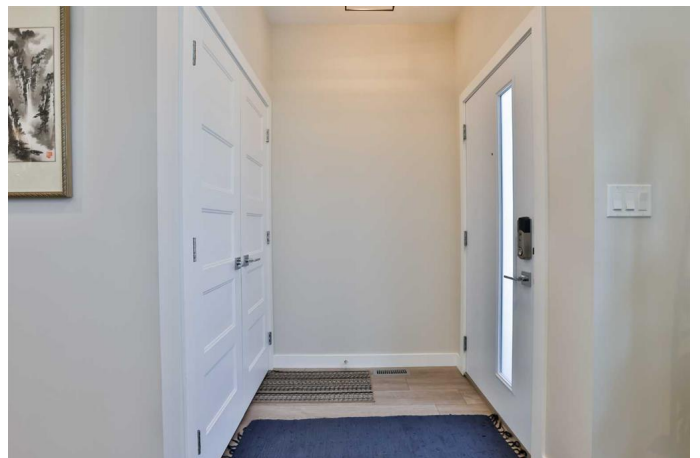
Modern Elegance in the Heart of South Lethbridge!

Welcome to this stunning 3-bedroom, 2.5-bath half-duplex, perfectly situated on a quiet, tree-lined street in the desirable Fleetwood neighbourhood. Built in 2018 with precision and care, this modern-style home blends sleek design with thoughtful functionality—all just a short walk from the hospital, scenic coulee trails, parks, schools, and the Urban Grocer. Step inside to a bright and airy atmosphere, where 9-foot ceilings and an open-concept layout create an inviting space ideal for both relaxing and entertaining. The kitchen is a true standout with its contemporary finishes, quartz countertops (throughout the home), stainless steel appliances—including a countertop gas stove and built-in oven—and plenty of storage.

Upstairs, you'll find three well-sized bedrooms, including a beautiful primary suite complete with an ensuite. The additional two bedrooms share a convenient Jack & Jill bathroom, each with direct access—ideal for families or guests.

Outside, enjoy a charming lawn and patio space that connects the home to the double detached garage, offering secure parking and additional storage. The basement offers exciting potential for future development, with room for another bedroom, bathroom, and a generous living area.

With incredible curb appeal, a prime location, and a perfect balance of style and practicality,



this home checks all the boxes. Donâ€™t miss your chance to live in one of South Lethbridgeâ€™s most charming and walkable neighbourhoods!

Built in 2018

**Essential Information**

MLS® #	A2211621
Price	\$445,000
Bedrooms	3
Bathrooms	3.00
Full Baths	2
Half Baths	1
Square Footage	1,300
Acres	0.06
Year Built	2018
Type	Residential
Sub-Type	Semi Detached
Style	2 Storey, Side by Side
Status	Active

**Community Information**

Address	962 11 Street S
Subdivision	Fleetwood
City	Lethbridge
County	Lethbridge
Province	Alberta
Postal Code	T1J 2P8

**Amenities**

Parking Spaces	3
Parking	Double Garage Detached, Parking Pad
# of Garages	2

**Interior**

Interior Features	High Ceilings, Open Floorplan, Quartz Counters
Appliances	Built-In Oven, Central Air Conditioner, Dishwasher, Garage Control(s), Gas Cooktop, Microwave, Refrigerator, Window Coverings

Heating	Forced Air
Cooling	Central Air
Has Basement	Yes
Basement	Full, Partially Finished

## Exterior

Exterior Features	None
Lot Description	See Remarks
Roof	Asphalt Shingle
Construction	Cement Fiber Board, Metal Siding, Vinyl Siding, Wood Siding
Foundation	Poured Concrete

## Additional Information

Date Listed	April 16th, 2025
Days on Market	27
Zoning	R-L

## Listing Details

Listing Office	Grassroots Realty Group
----------------	-------------------------

Data is supplied by Pillar 9â„¢ MLS® System. Pillar 9â„¢ is the owner of the copyright in its MLS® System. Data is deemed reliable but is not guaranteed accurate by Pillar 9â„¢. The trademarks MLS®, Multiple Listing Service® and the associated logos are owned by The Canadian Real Estate Association (CREA) and identify the quality of services provided by real estate professionals who are members of CREA. Used under license.