

\$474,900 - 1984 Parkside Close, Coaldale

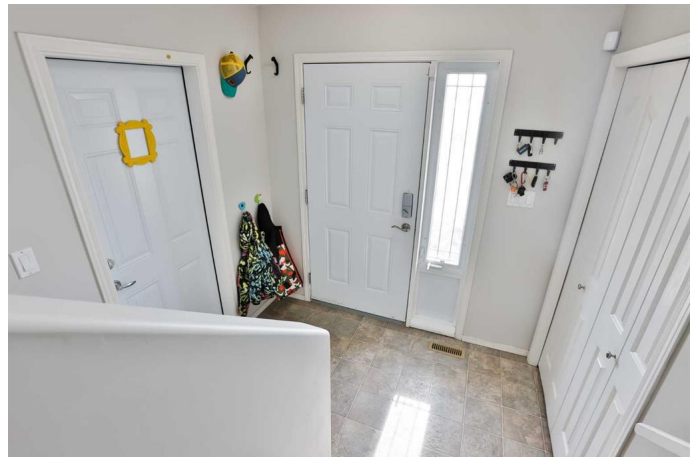
MLS® #A2209274

\$474,900

5 Bedroom, 3.00 Bathroom, 1,215 sqft
Residential on 0.13 Acres

NONE, Coaldale, Alberta

This spacious 1,200 sq. ft. bi-level home is a rare find offering 5 bedrooms, 3 full bathrooms, and a double-attached garage in a truly unique Coaldale location. Built in 2007 by Destiny Homes, this fully developed property is directly adjacent to the Coaldale dog park and campground, providing a peaceful setting with only one direct neighbour and lane access on two sides. Inside, you'll find an open layout with 3 bedrooms up and 2 more down, including a generous primary suite with a full 3-piece ensuite. The heart of the home features warm Adora cabinetry, bright and open living areas including a spacious lower-level family room perfect for relaxing or entertaining. The basement also includes a large laundry room with plenty of extra storage. What really sets this property apart is the incredible parking flexibility room for your vehicles, toys, RVs, or campers with ease. It's a little like country living right in town! All appliances and central A/C are included in the asking price. With space, comfort, and location, this is a perfect fit for a growing family. Don't miss out call your Realtor today!



Built in 2007

Essential Information

MLS® #	A2209274
Price	\$474,900

Bedrooms	5
Bathrooms	3.00
Full Baths	3
Square Footage	1,215
Acres	0.13
Year Built	2007
Type	Residential
Sub-Type	Detached
Style	Bi-Level
Status	Active

Community Information

Address	1984 Parkside Close
Subdivision	NONE
City	Coaldale
County	Lethbridge County
Province	Alberta
Postal Code	T1M 0A1

Amenities

Parking Spaces	5
Parking	Double Garage Attached
# of Garages	2

Interior

Interior Features	Open Floorplan, Pantry, Storage, Vinyl Windows, Sump Pump(s)
Appliances	See Remarks
Heating	Forced Air
Cooling	Central Air
Has Basement	Yes
Basement	Finished, Full

Exterior

Exterior Features	None
Lot Description	Back Lane, Back Yard, Cul-De-Sac, Irregular Lot, Landscaped, No Neighbours Behind
Roof	Asphalt Shingle
Construction	Vinyl Siding, Wood Frame
Foundation	Poured Concrete

Additional Information

Date Listed	April 7th, 2025
Days on Market	10
Zoning	RES

Listing Details

Listing Office RE/MAX REAL ESTATE - LETHBRIDGE

Data is supplied by Pillar 9â„¸ MLSÂ® System. Pillar 9â„¸ is the owner of the copyright in its MLSÂ® System. Data is deemed reliable but is not guaranteed accurate by Pillar 9â„¸. The trademarks MLSÂ®, Multiple Listing ServiceÂ® and the associated logos are owned by The Canadian Real Estate Association (CREA) and identify the quality of services provided by real estate professionals who are members of CREA. Used under license.