

\$23,650 - 115 Fielding Place, Hanna

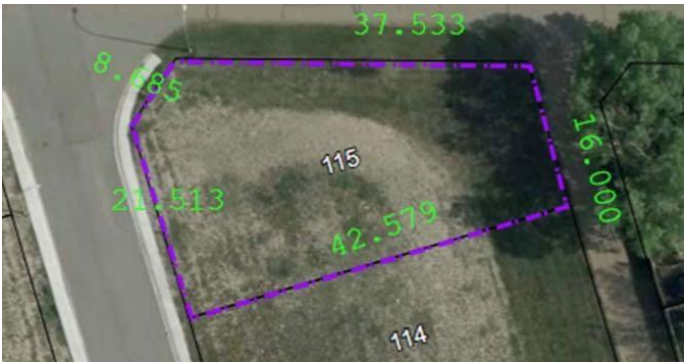
MLS® #A2209021

\$23,650

0 Bedroom, 0.00 Bathroom,
Land on 0.28 Acres

Hanna, Hanna, Alberta

Nestled in a highly sought-after neighborhood, this expansive lot offers endless possibilities for your dream home. With plenty of space to build, you'll have the perfect canvas to design a home that suits your style and needs. Water, sewer, and all other utilities are conveniently located at the property line underground, with no overhead wires to interrupt your view or peace of mind. The property is located in a great community known for its welcoming atmosphere, excellent amenities, and a perfect balance of privacy and connectivity. Enjoy the tranquility of open space while being just a short drive from schools, shops, and dining. Whether you're looking to build a custom home or simply invest in a prime location, this lot is an opportunity you don't want to miss!



Essential Information

MLS® #	A2209021
Price	\$23,650
Bathrooms	0.00
Acres	0.28
Type	Land
Sub-Type	Residential Land
Status	Active

Community Information

Address	115 Fielding Place
---------	--------------------

Subdivision	Hanna
City	Hanna
County	Special Area 2
Province	Alberta
Postal Code	T0J1P0

Exterior

Lot Description	Irregular Lot
-----------------	---------------

Additional Information

Date Listed	April 4th, 2025
Days on Market	14
Zoning	R1

Listing Details

Listing Office	Real Estate Centre
----------------	--------------------

Data is supplied by Pillar 9â„¢ MLS® System. Pillar 9â„¢ is the owner of the copyright in its MLS® System. Data is deemed reliable but is not guaranteed accurate by Pillar 9â„¢. The trademarks MLS®, Multiple Listing Service® and the associated logos are owned by The Canadian Real Estate Association (CREA) and identify the quality of services provided by real estate professionals who are members of CREA. Used under license.