

\$383,000 - 3607 20 Avenue S, Lethbridge

MLS® #A2200117

\$383,000

4 Bedroom, 3.00 Bathroom, 1,252 sqft
Residential on 0.15 Acres

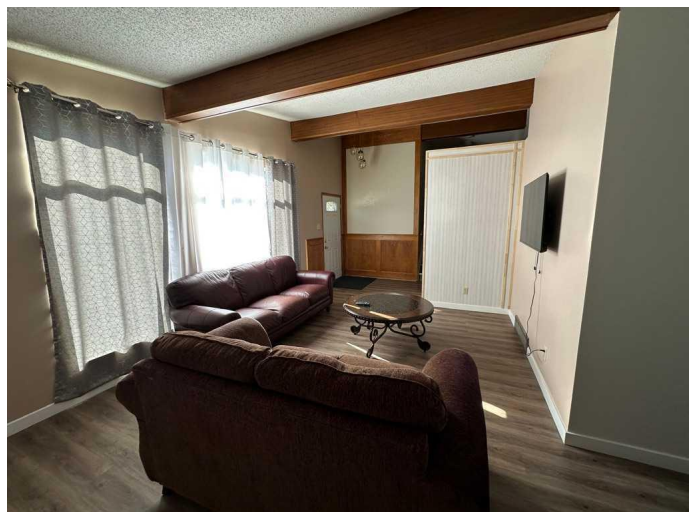
Lakeview, Lethbridge, Alberta

This well-kept 4-level split offers plenty of space and character in a sought-after South-side neighbourhood. Featuring vaulted ceilings for an open, airy feel, this home has many updates while maintaining its classic charm. The lovely backyard is perfect for relaxing or entertaining, and there ample parking including space for an RV. Conveniently located near Lethbridge Polytechnic, schools, parks, and shopping, with easy access to main roads. Don't miss this great opportunity for a spacious home in a prime location! Contact your favourite real estate agent today for a viewing.

Built in 1976

Essential Information

MLS® #	A2200117
Price	\$383,000
Bedrooms	4
Bathrooms	3.00
Full Baths	2
Half Baths	1
Square Footage	1,252
Acres	0.15
Year Built	1976
Type	Residential
Sub-Type	Detached
Style	4 Level Split
Status	Active



Community Information

Address	3607 20 Avenue S
Subdivision	Lakeview
City	Lethbridge
County	Lethbridge
Province	Alberta
Postal Code	T1K 4G5

Amenities

Parking Spaces	2
Parking	Off Street

Interior

Interior Features	See Remarks
Appliances	Dishwasher, Electric Stove, Refrigerator, Washer/Dryer
Heating	Forced Air
Cooling	Central Air
Fireplace	Yes
# of Fireplaces	1
Fireplaces	Gas
Has Basement	Yes
Basement	Finished, Full

Exterior

Exterior Features	None
Lot Description	Back Lane, Back Yard, Landscaped
Roof	Membrane
Construction	Wood Frame
Foundation	Poured Concrete

Additional Information

Date Listed	March 4th, 2025
Days on Market	27
Zoning	R-L

Listing Details

Listing Office	Grassroots Realty Group
----------------	-------------------------

Data is supplied by Pillar 9â„¢ MLSÂ® System. Pillar 9â„¢ is the owner of the copyright in its MLSÂ® System. Data is deemed reliable but is not guaranteed accurate by Pillar 9â„¢. The trademarks MLSÂ®, Multiple Listing ServiceÂ® and the associated logos are owned by The Canadian Real Estate Association (CREA) and identify the quality of services

provided by real estate professionals who are members of CREA. Used under license.