

\$269,900 - 4d, 80 Galbraith Drive Sw, Calgary

MLS® #A2196560

\$269,900

2 Bedroom, 1.00 Bathroom, 880 sqft

Residential on 0.00 Acres

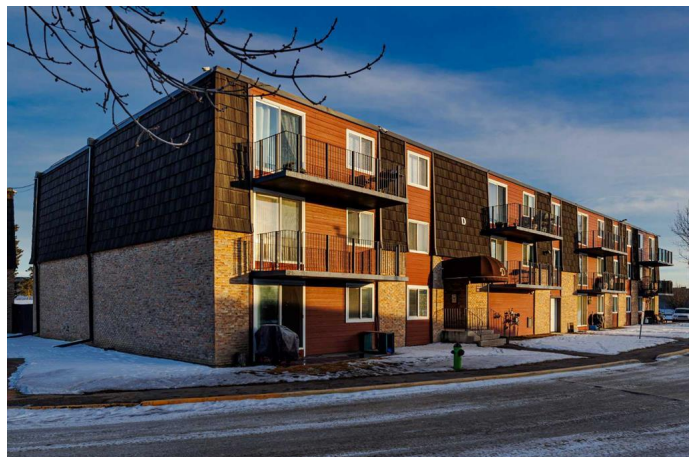
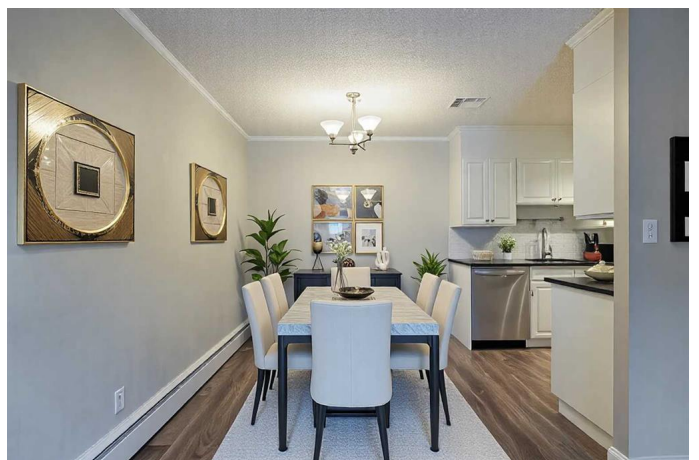
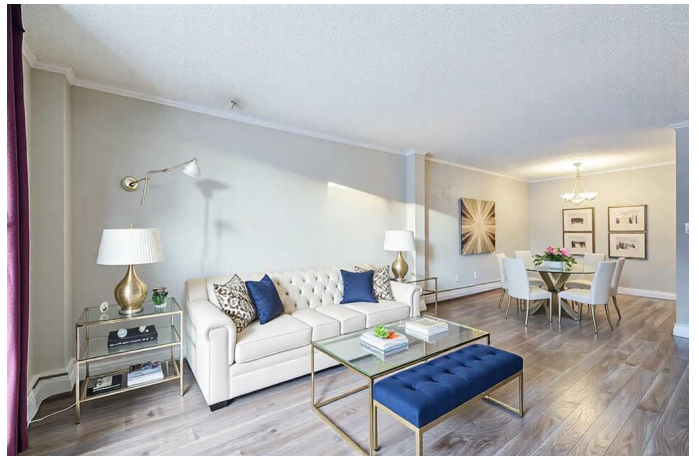
Glamorgan, Calgary, Alberta

This beautifully updated 2-bedroom main floor corner unit condo is ideally located just a short walk from Mount Royal University. Perfect for those who enjoy entertaining, the galley kitchen features stainless steel appliances, quartz countertops, and modern cabinetry. The spacious full bathroom has been updated with a soaker tub, tile surround, tile flooring, and a sleek quartz countertop vanity. Both bedrooms are generously sized and have large windows for lots of natural light. For added convenience, the unit includes in suite laundry, ensuring you never have to leave home to take care of laundry needs. Step outside onto your patio, perfect for hosting friends and family or simply enjoying the evening sun. This condo is professionally managed and offers both comfort and security. Don't miss the chance to make this stunning unit your new home!

Built in 1971

Essential Information

MLS® #	A2196560
Price	\$269,900
Bedrooms	2
Bathrooms	1.00
Full Baths	1
Square Footage	880
Acres	0.00
Year Built	1971



Type	Residential
Sub-Type	Apartment
Style	Low-Rise(1-4)
Status	Active

Community Information

Address	4d, 80 Galbraith Drive Sw
Subdivision	Glamorgan
City	Calgary
County	Calgary
Province	Alberta
Postal Code	T3E3H2

Amenities

Amenities	Snow Removal, Trash, Visitor Parking
Parking Spaces	1
Parking	Assigned, Stall

Interior

Interior Features	No Smoking Home, Separate Entrance, Stone Counters
Appliances	Dishwasher, Electric Stove, Microwave Hood Fan, Refrigerator, Washer/Dryer
Heating	Baseboard, Electric, Natural Gas
Cooling	None
# of Stories	3
Basement	None

Exterior

Exterior Features	Barbecue
Roof	Tar/Gravel
Construction	Vinyl Siding, Wood Frame
Foundation	Poured Concrete

Additional Information

Date Listed	February 24th, 2025
Days on Market	41
Zoning	M-C1

Listing Details

Listing Office	The Real Estate District
----------------	--------------------------

Data is supplied by Pillar 9â„¸ MLSÂ® System. Pillar 9â„¸ is the owner of the copyright in its MLSÂ® System. Data is deemed reliable but is not guaranteed accurate by Pillar 9â„¸. The trademarks MLSÂ®, Multiple Listing ServiceÂ® and the associated logos are owned by The Canadian Real Estate Association (CREA) and identify the quality of services provided by real estate professionals who are members of CREA. Used under license.