

\$564,900 - 552 Chelsea Gardens, Chestermere

MLS® #A2193334

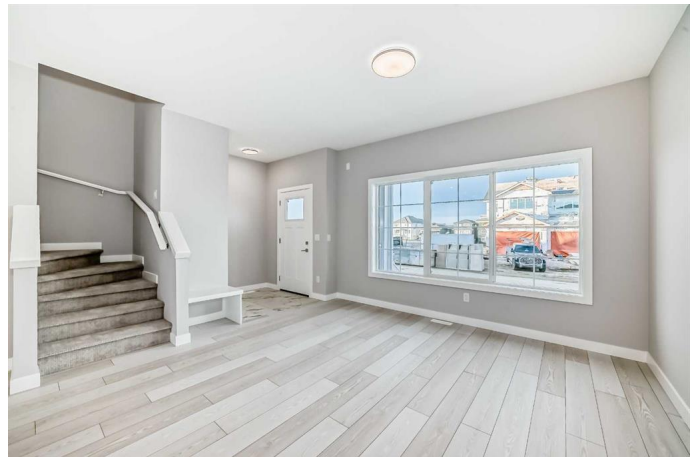
\$564,900

3 Bedroom, 3.00 Bathroom, 1,480 sqft

Residential on 0.07 Acres

Chelsea_CH, Chestermere, Alberta

Discover your perfect BRAND NEW NEVER OCCUPIED HOME in Chestermere that comes up with DOUBLE DETACHED GARAGE & SEPARATE SIDE ENTRANCE!!!! Thoughtfully crafted, this stunning residence seamlessly blends modern design, top-tier craftsmanship, and exceptional functionality. With a SEPARATE SIDE ENTRANCE, this home is designed for comfortable living and endless possibilities. Featuring THREE spacious BEDROOMS and two and half Washrooms, it provides the flexibility to adapt to your lifestyle. At the heart of the home lies the chef-inspired kitchen, boasting full-height cabinetry with soft-close doors and drawers, elegant quartz countertops, and a stainless steel appliance package that combines style and durability. The main floor showcases 9-FOOT CEILINGS and premium LVP flooring, creating a bright and open atmosphere that flows effortlessly between spaces. The primary bedroom is a serene retreat with its tray ceiling, spacious walk-in closet, and well-appointed 3-piece ensuite, offering a private haven of comfort and style. Convenience is paramount on the upper level, featuring a dedicated laundry room with a washer and dryer, as well as a modern 4-piece bathroom to serve the additional bedrooms. The unfinished basement, complete with a separate side entrance, offers a blank canvas for customization—whether it's a home gym, extra storage, or additional living quarters. A



spacious DOUBLE CAR GARAGE, currently under development, ensures ample room for parking and storage, adding even more value to this exceptional home. This home is a perfect blend of style, function, and versatility, located next to community pond/walking trails and comes with NEW HOME WARRANTY for your peace of mind. Chelsea is Chestermere's gateway, positioned just five minutes from the picturesque Chestermere Lake, and with easy access to Calgary, this home offers the perfect balance of tranquillity and convenience. Quick access to Stoney Trail and other major highways ensures you're never far from where you need to be. With local amenities including transit services from Calgary, this is the ideal place to call home.

Built in 2024

Essential Information

| | |
|----------------|------------------------|
| MLS® # | A2193334 |
| Price | \$564,900 |
| Bedrooms | 3 |
| Bathrooms | 3.00 |
| Full Baths | 2 |
| Half Baths | 1 |
| Square Footage | 1,480 |
| Acres | 0.07 |
| Year Built | 2024 |
| Type | Residential |
| Sub-Type | Semi Detached |
| Style | 2 Storey, Side by Side |
| Status | Active |

Community Information

| | |
|-------------|---------------------|
| Address | 552 Chelsea Gardens |
| Subdivision | Chelsea_CH |
| City | Chestermere |
| County | Chestermere |

| | |
|-------------|---------|
| Province | Alberta |
| Postal Code | T1X2V5 |

Amenities

| | |
|----------------|---|
| Parking Spaces | 4 |
| Parking | Alley Access, Double Garage Detached, On Street |
| # of Garages | 2 |

Interior

| | |
|-------------------|---|
| Interior Features | Kitchen Island, No Animal Home, No Smoking Home, Open Floorplan, Pantry, Separate Entrance, Tray Ceiling(s) |
| Appliances | Dishwasher, Dryer, Microwave, Refrigerator, Washer, Gas Range |
| Heating | Forced Air |
| Cooling | None |
| Has Basement | Yes |
| Basement | Exterior Entry, Full, Unfinished |

Exterior

| | |
|-------------------|---|
| Exterior Features | BBQ gas line, Private Yard |
| Lot Description | Back Yard, Front Yard, Interior Lot, Level, Street Lighting |
| Roof | Asphalt Shingle |
| Construction | Vinyl Siding |
| Foundation | Poured Concrete |

Additional Information

| | |
|----------------|--------------------|
| Date Listed | February 9th, 2025 |
| Days on Market | 75 |
| Zoning | R-3 |

Listing Details

| | |
|----------------|--------------------|
| Listing Office | Royal LePage METRO |
|----------------|--------------------|

Data is supplied by Pillar 9â„¢ MLSÂ® System. Pillar 9â„¢ is the owner of the copyright in its MLSÂ® System. Data is deemed reliable but is not guaranteed accurate by Pillar 9â„¢. The trademarks MLSÂ®, Multiple Listing ServiceÂ® and the associated logos are owned by The Canadian Real Estate Association (CREA) and identify the quality of services provided by real estate professionals who are members of CREA. Used under license.