

# \$62,000 - 4 Pine Place E, Claresholm

MLS® #A2176917

**\$62,000**

0 Bedroom, 0.00 Bathroom,  
Land on 0.16 Acres

NONE, Claresholm, Alberta

Welcome to Claresholm's newest subdivision, Pine Place East. Tucked up in the NE corner of town and backing onto Patterson Park. This is one of the eight lots available. Individuals and developers welcome. R1 zoning and GST applicable.

## Essential Information

MLS® #	A2176917
Price	\$62,000
Bathrooms	0.00
Acres	0.16
Type	Land
Sub-Type	Residential Land
Status	Active

## Community Information

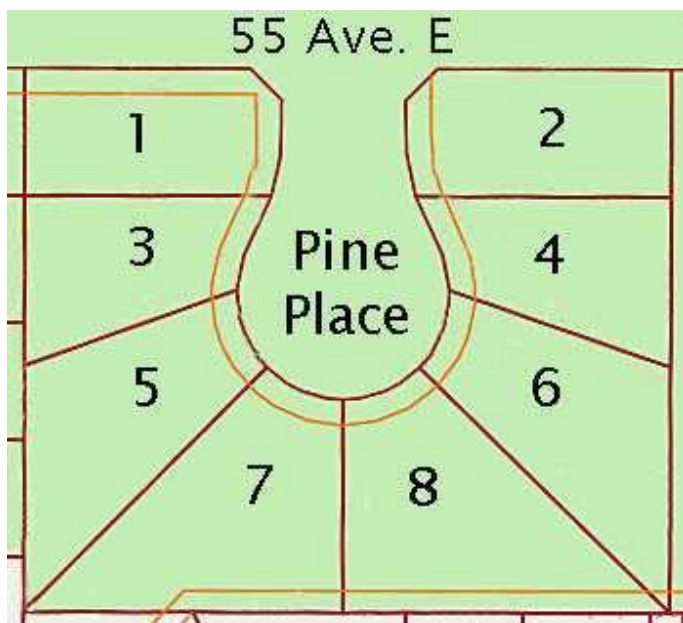
Address	4 Pine Place E
Subdivision	NONE
City	Claresholm
County	Willow Creek No. 26, M.D. of
Province	Alberta
Postal Code	T0L 0T0

## Amenities

Utilities Electricity Available, Natural Gas Available, Underground Utilities

## School Information

District Livingstone Range School Division No. 68



## **Additional Information**

Date Listed	November 1st, 2024
Days on Market	160
Zoning	R1

## **Listing Details**

Listing Office	MaxWell Capital Realty
----------------	------------------------

Data is supplied by Pillar 9â„¸ MLSÂ® System. Pillar 9â„¸ is the owner of the copyright in its MLSÂ® System. Data is deemed reliable but is not guaranteed accurate by Pillar 9â„¸. The trademarks MLSÂ®, Multiple Listing ServiceÂ® and the associated logos are owned by The Canadian Real Estate Association (CREA) and identify the quality of services provided by real estate professionals who are members of CREA. Used under license.