

\$749,900 - 244 Emerald Drive, Red Deer

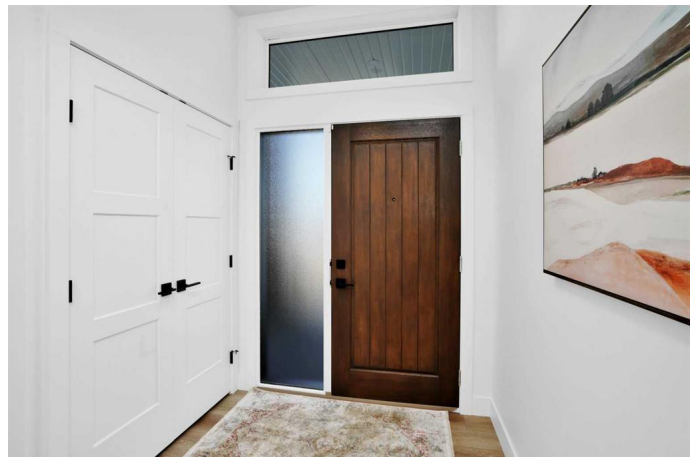
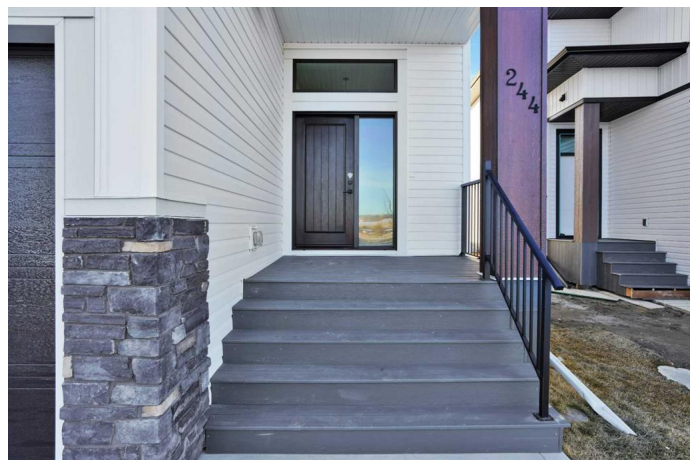
MLS® #A2173041

\$749,900

3 Bedroom, 3.00 Bathroom, 1,995 sqft
Residential on 0.10 Acres

Evergreen, Red Deer, Alberta

Welcome to this exquisite two-story home built by McGonigal Signature Homes located in the picturesque neighborhood of Evergreen. This stunning property overlooks a serene green space and pond with tranquil walking paths, offering a peaceful and scenic setting. As you enter the front doors, you are greeted by a spacious foyer with custom metal railings and soaring ceilings. A walk through mudroom off the garage leads into your kitchen with a large quartz island, stunning tile back splash perfect for entertaining, large windows flood the space with natural light. This home features an open floor with rich natural vinyl plank flooring, gas fireplace and a covered deck with a west facing back yard. This home boasts three bedrooms, including a luxurious primary bedroom with a five-piece ensuite and a walk-in closet. The bonus room and covered deck on this level provide a perfect retreat to relax and unwind while overlooking the water feature. and walking paths. Convenience is key with second-floor laundry and stylish finishes throughout. The unfinished basement with 9'4 ceilings offers endless possibilities for customization, spray foam insulation in the floor joists and R10 insulation in the slab with the roughed in underfloor heat. Design the basement of your dreams with ample space to create a personalized living area. This home's location, curb appeal, and interior finishes are truly exceptional, making it a must-see property in Evergreen



Built in 2022

Essential Information

| | |
|----------------|-------------|
| MLS® # | A2173041 |
| Price | \$749,900 |
| Bedrooms | 3 |
| Bathrooms | 3.00 |
| Full Baths | 2 |
| Half Baths | 1 |
| Square Footage | 1,995 |
| Acres | 0.10 |
| Year Built | 2022 |
| Type | Residential |
| Sub-Type | Detached |
| Style | 2 Storey |
| Status | Active |

Community Information

| | |
|-------------|-------------------|
| Address | 244 Emerald Drive |
| Subdivision | Evergreen |
| City | Red Deer |
| County | Red Deer |
| Province | Alberta |
| Postal Code | T4E 1A6 |

Amenities

| | |
|----------------|------------------------|
| Amenities | None |
| Parking Spaces | 2 |
| Parking | Double Garage Attached |
| # of Garages | 2 |

Interior

| | |
|-------------------|--|
| Interior Features | Kitchen Island, No Smoking Home, Open Floorplan, Granite Counters, Vinyl Windows |
| Appliances | Refrigerator, Microwave Hood Fan, Oven, Range |
| Heating | Forced Air |
| Cooling | None |
| Fireplace | Yes |
| # of Fireplaces | 1 |

| | |
|--------------|------------------|
| Fireplaces | Gas |
| Has Basement | Yes |
| Basement | Full, Unfinished |

Exterior

| | |
|-------------------|--|
| Exterior Features | Private Yard |
| Lot Description | Back Lane, Back Yard, Few Trees, City Lot, Creek/River/Stream/Pond, Environmental Reserve, Front Yard, Street Lighting |
| Roof | Asphalt Shingle |
| Construction | Brick, Vinyl Siding, Wood Frame, Concrete |
| Foundation | Poured Concrete |

Additional Information

| | |
|----------------|--------------------|
| Date Listed | October 15th, 2024 |
| Days on Market | 171 |
| Zoning | R1G |
| HOA Fees | 100 |
| HOA Fees Freq. | ANN |

Listing Details

| | |
|----------------|------------------------------------|
| Listing Office | RE/MAX real estate central alberta |
|----------------|------------------------------------|

Data is supplied by Pillar 9â„¢ MLSÂ® System. Pillar 9â„¢ is the owner of the copyright in its MLSÂ® System. Data is deemed reliable but is not guaranteed accurate by Pillar 9â„¢. The trademarks MLSÂ®, Multiple Listing ServiceÂ® and the associated logos are owned by The Canadian Real Estate Association (CREA) and identify the quality of services provided by real estate professionals who are members of CREA. Used under license.