

\$42,750 - 23 Bear Creek Drive, High Level

MLS® #A1027876

\$42,750

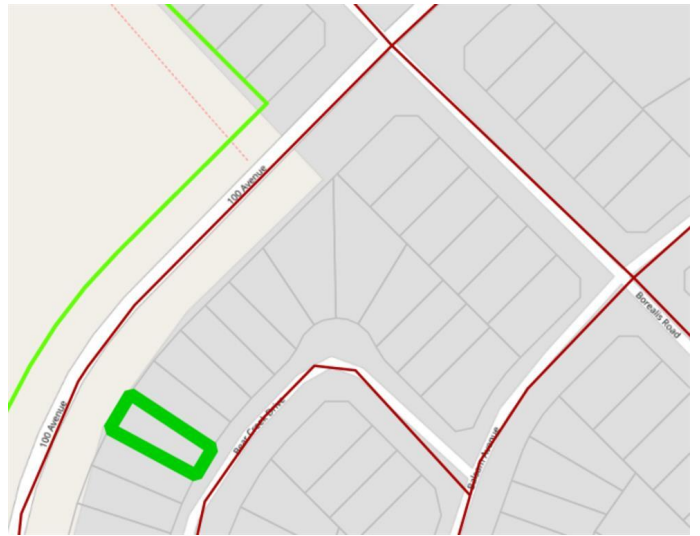
0 Bedroom, 0.00 Bathroom,
Land on 0.12 Acres

NONE, High Level, Alberta

There are so many reasons why this may be the perfect location for your new home.

LOCATION, LOCATION, LOCATION!!!

Close to the hospital, shopping, the Toy Lending Library and then there's the price? This neighborhood is zoned R-2 which means manufactured and modular homes, an economical alternative to stick built homes, are permitted uses. DEVELOPERS?? An awesome location to build revenue properties.



Essential Information

MLS® #	A1027876
Price	\$42,750
Bathrooms	0.00
Acres	0.12
Type	Land
Sub-Type	Land
Status	Active

Community Information

Address	23 Bear Creek Drive
Subdivision	NONE
City	High Level
County	Mackenzie County
Province	Alberta
Postal Code	T0H 1Z0

Amenities

Utilities	Electricity at Lot Line, Natural Gas at Lot Line
-----------	--

Additional Information

Date Listed	August 27th, 2020
Days on Market	1668
Zoning	Residential

Listing Details

Listing Office	Century 21 Prime Realty (2002) Ltd.
----------------	-------------------------------------

Data is supplied by Pillar 9â„¢ MLS® System. Pillar 9â„¢ is the owner of the copyright in its MLS® System. Data is deemed reliable but is not guaranteed accurate by Pillar 9â„¢. The trademarks MLS®, Multiple Listing Service® and the associated logos are owned by The Canadian Real Estate Association (CREA) and identify the quality of services provided by real estate professionals who are members of CREA. Used under license.